

# Mappa, Inc.

1956 Richardson Highway  
 North Pole, AK 99705  
 (907) 488-1266

## Special Inspection Daily Report

Client: **Alcan Builders** Project: **EIE 430**

Test Date: **14 June 2025** Test Time: **12 pm** Inspector: **M. Mack**

Contact: **Bobby/Craig** Type of Inspection: **Reinforcement**

Time Charged to Project: Start Time **11:30am** End Time **1pm** Total Hours Charged RT **1.5** OT \_\_\_\_\_

### Inspections performed and locations.

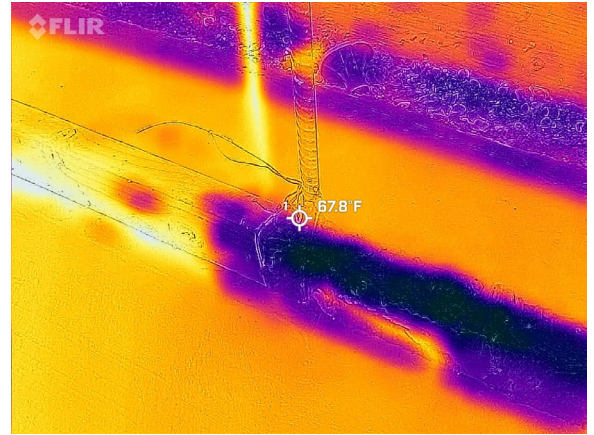
Location	Inspection Performed
77°F Sunny	
	Checked reinforcement for size, type, bend development +1/2" from true, end development, lap splices, alignment, clearances, end development
A1/S-103 A1, D4/ S-500 A2/S-502	Dimensions verified by Alcan
Section 15.9.1 in ACI 318-08	



Left: Foundation footing

Right: Previously placed concrete footing, doweled Boding agent and concrete brought to SSD before placement





Left: Concrete pump and staging  
Right: Concrete temperature, respectfully 40 minutes after placement

Items requiring correction, correction of previously listed items and/or previously listed uncorrected items

	RFI for relocation of sump and step footing changes on at 6.3 line
--	--

To the best of my knowledge, work inspected was in accordance with the approved plans and specifications.

Signature: Mika Mack

Printed Name: M. Mack